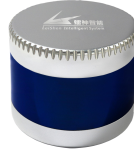


## CX Series 16-Channel LiDAR



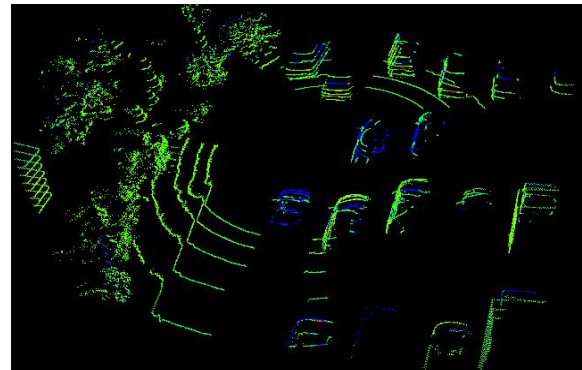
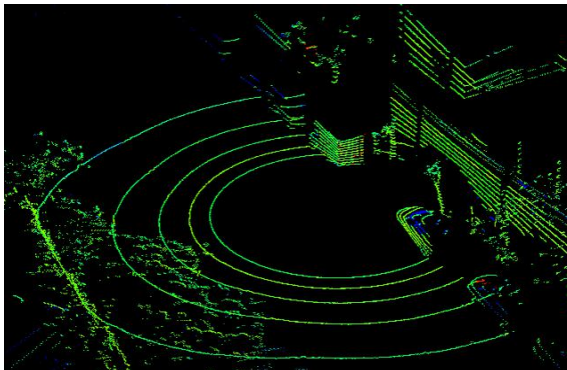
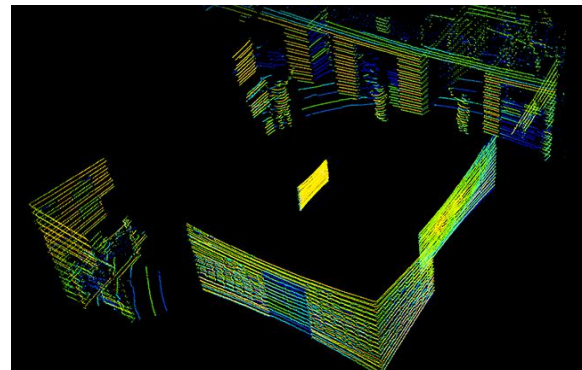
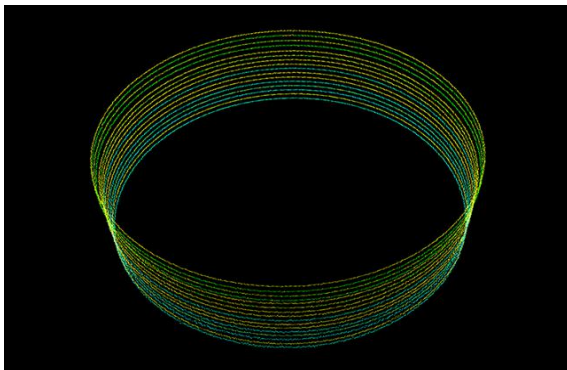
### Abstract

CX Series 16 channel LIDAR achieves 360 ° 3D high-speed scanning with 16-beam laser, measurement range up to 200 m,  $\pm 3\text{cm}$  accuracy, up to  $1.33^\circ$  vertical angle resolution, widely used in autonomous vehicle, ADAS, smart transportation, service robots, logistics, surveying and mapping, security and so on.

### Features

- High point density, capable of generating approximately 320,000 3D point cloud coordinates per second
- Wide field of view, with  $360^\circ$  horizontal FOV and  $32^\circ$  vertical FOV.
- Compact size and light weight

### Demo



## Specifications

|                              |            |   |           |           |           |
|------------------------------|------------|---|-----------|-----------|-----------|
| Model                        |            | C16                                       |           |           |           |
| Channel                      |            | 16  |           |           |           |
| Measurement Technique        |            | Time of Flight (TOF)                      |           |           |           |
| Wavelength                   |            | 905nm                                     |           |           |           |
| Laser Product Classification |            | Class 1 Eye-safe/ IEC 60825-1:2007 & 2014 |           |           |           |
| Measurement Range            |            | 70m / 120m / 150m                         |           |           |           |
| Ranging Accuracy             |            | ±3cm                                      |           |           |           |
| Data Points Generated        |            | 320,000 points per second                 |           |           |           |
| Rotation Rate                |            | 5Hz , 10Hz , 20Hz                         |           |           |           |
| Field of View (FOV)          | Horizontal | 360°                                      |           |           |           |
|                              | Vertical   | -15°~ 15°                                 | -14°~ 16° | -15°~ 15° | -10°~ 10° |
| Angular Resolution           | Horizontal | 5Hz: 0.09° / 10Hz: 0.18° / 20Hz: 0.36°    |           |           |           |
|                              | Vertical   | 2°  |           | 2°        | 1.33°     |
| Operating Voltage            |            | 9V~ 36VDC                                 |           |           |           |
| Communication Interface      |            | Ethernet , PPS                            |           |           |           |
| Operating Temperature        |            | -20°C ~ 60°C ( Customized up to -40°C )   |           |           |           |
| Shock Test                   |            | 500m/sec <sup>2</sup> , last11ms          |           |           |           |
| Vibration                    |            | 5Hz-2000Hz , 3G rms                       |           |           |           |
| IP                           |            | IP 67                                     |           |           |           |
| Dimension ( D·H )            |            | 120*110mm                                 |           | 102*78mm  |           |
| Weight                       |            | 1600g                                     |           | 1000g     |           |