

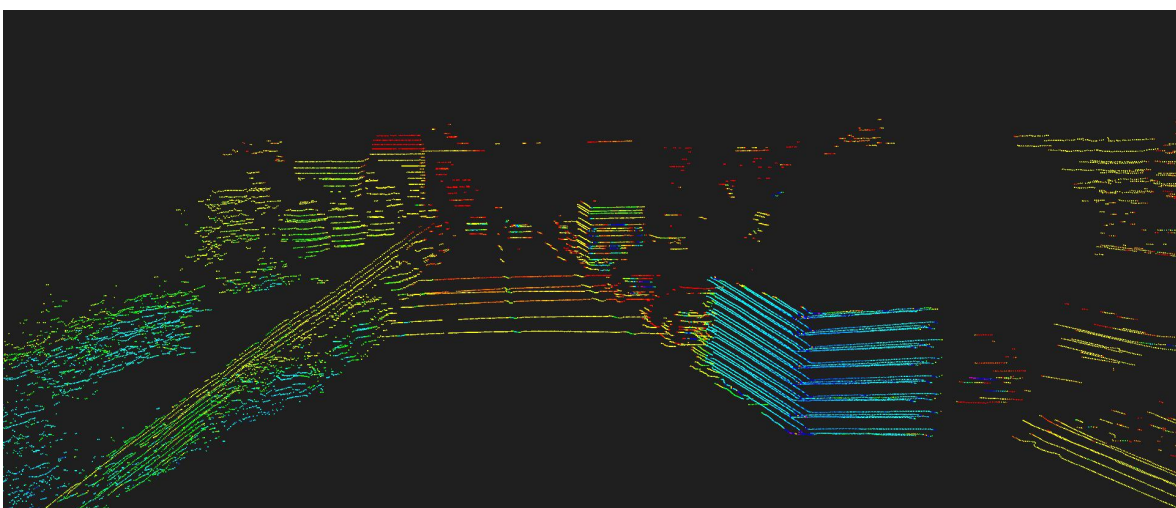
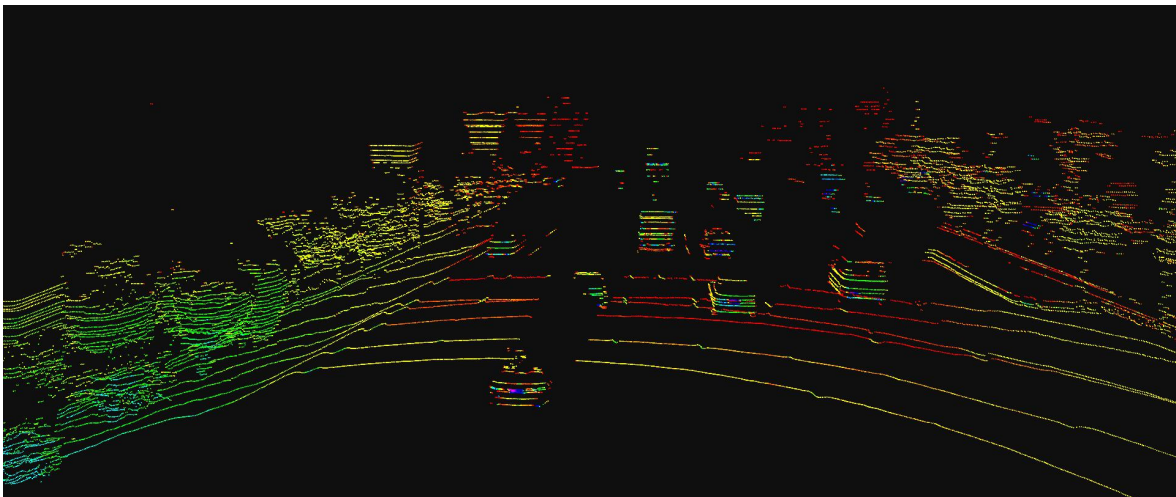
CH 32 Hybrid-Solid State LiDAR



Abstract

CH32 is designed for Automotive Grade Standards to meet demands of L3- L5 autonomous cars, which can work with low-speed cars, V2X and long operation scenarios. CH32 is the 1st LiDAR that officially passed auto-grade test in China.

Demo



Parameters

Model		CH32	
Channel		32	
Measurement Technique		TOF	
Wavelength		905nm	
Laser Classification		Class 1 (Eye-safe)	
Range	Typical	100m / 150m	
	Minimum	90m / 135m/ 180m	
Accuracy		±2cm(0.5m ~ 200m)	
Data Points Generated	Single Return	426,000 pts/s	
Rotation Rate		5Hz, 10Hz, 20Hz(optional)	
FOV	Horizontal	120°	
	Vertical	-6.67°~ 4.58°	-14°~7°
Resolution	Horizontal	5Hz: 0.045° / 10Hz: 0.09°/ 20Hz: 0.18°	
	Vertical	Vertical angle resolution between 0 ~ 0.81 °, minimum 0.09 ° in the middle and a maximum of 0.47 °	0.33° and 1.89°
Operating Voltage		9V~36V DC	
Operating Temperature		-20°C ~ 65°C(industrial grade) ; -40°C ~ 85°C(auto-grade)	
Communication Interface		100M Ethernet, PPS	
Power Consumption		10 W	
Shock Test		500m/sec ² , last11ms	
Vibration		5Hz-2000Hz, 3G rms	
IP		IP67	
Weight		1.5Kg	
Dimension (L·W·H)		155 * 107.5 * 90mm	